



INNOVATIVE WATER SOLUTIONS

Delivering trusted infrastructure solutions for water, wastewater and the industrial sectors across Australia and New Zealand.



Welcome to AVK in Australia and New Zealand

At AVK, we deliver innovative water solutions that support communities and industry.

Through advanced products and practical engineering solutions, AVK helps ensure safe, reliable and sustainable outcomes.

By combining global expertise with strong local insight, we partner with customers to meet their evolving demands.

Partnering with AVK means access to proven experience, technical excellence and a commitment to continuous improvement.

As a global leader, we consistently raise industry standards through innovation, performance and reliability.

Everything we do is guided by our five core values:

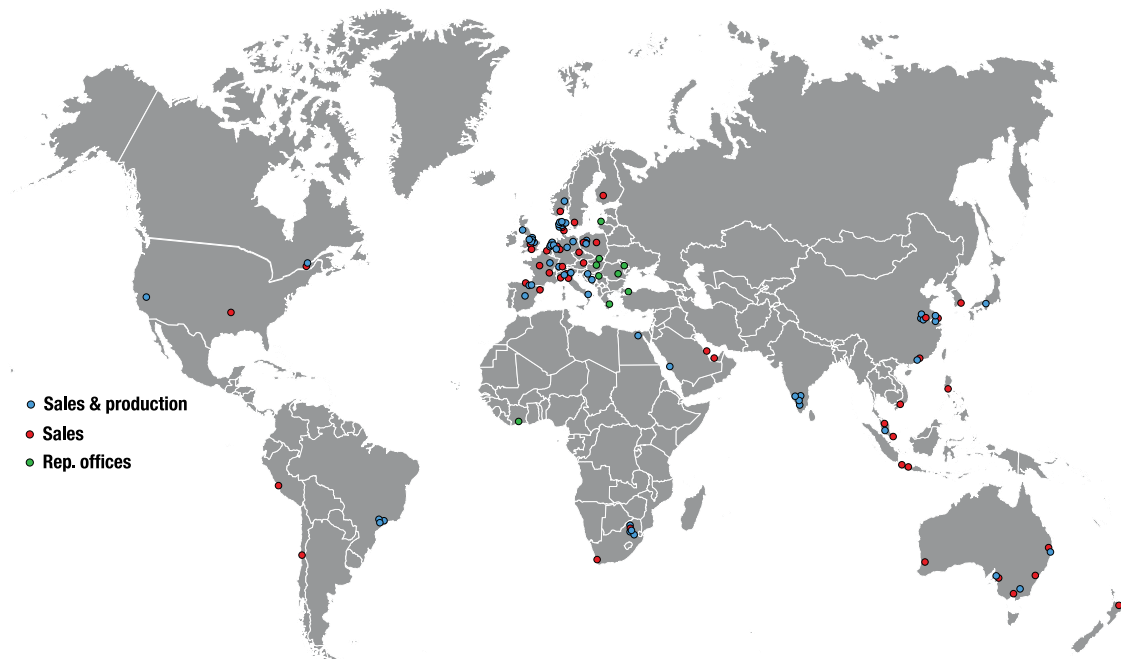
QUALITY • RELIABILITY • INNOVATION • SUSTAINABILITY • CUSTOMER SERVICE



AVK Australia's Head Office | Wingfield, South Australia

GLOBAL STRENGTH LOCAL FOCUS

The AVK Group is a privately owned industrial group comprising more than 100 companies worldwide. Our products are designed to meet international standards and are supplied to markets across the globe. While global in scale, AVK remains local in approach—serving customers through regional expertise, full-line partnerships and a single point of entry to a comprehensive portfolio of high-quality solutions. Customers can rely on long service life, dependable performance and proven functionality.



AVK Australia and New Zealand is proud to be part of the AVK Group—one of the world's leading international industrial manufacturers. With more than 20 years of regional presence, we deliver market-driven solutions designed for cities, towns and rural communities across the ANZ region.

Leveraging local manufacturing capability and the AVK global supply network, we support pipeline infrastructure, water and wastewater treatment, sewage processing, fire protection, irrigation, dams and reservoirs, mining operations and gas distribution.

We don't just supply products—we deliver forward-thinking, integrated water solutions.

1941

Established as
a local machine
shop in Denmark

+5,500

Employees
worldwide

+100

Companies
in the Group

+1000

Million EUR
of turnover

OUR SEGMENTS IN AUSTRALIA & NEW ZEALAND



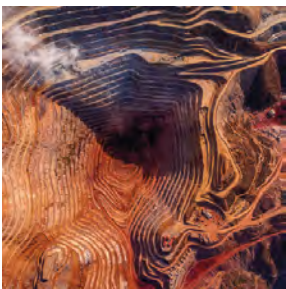
Water Supply

AVK delivers durable, high-performance solutions for safe and reliable water supply across residential, municipal and industrial systems. Our valves, hydrants, couplings, and accessories feature advanced rubber technology, in-house coatings, and certified drinking water approvals. These innovations ensure long service life, reduced maintenance and efficient operation, supporting sustainable infrastructure and consistent water delivery that meets strict quality and regulatory standards worldwide.



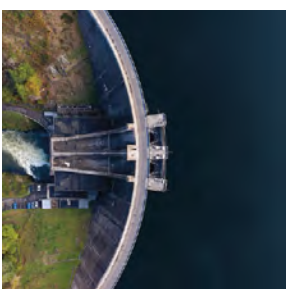
Wastewater Treatment

AVK wastewater solutions are engineered for harsh, corrosive environments, ensuring reliable performance across municipal, industrial, agricultural and stormwater systems. Manufactured to strict standards, our products resist chemical exposure and wear, extending service life and reducing maintenance. With durable materials and protective coatings, AVK supports efficient wastewater management, helping maintain system integrity, environmental compliance and long-term operational reliability in demanding conditions.



Mining

AVK provides robust flow control solutions designed for extreme mining environments. Built to handle abrasive materials, high pressures and harsh conditions, our products ensure reliable performance and continuous operation. These solutions minimise downtime and maintenance while supporting safe, efficient resource handling. AVK's engineering expertise delivers durable infrastructure that enhances productivity and operational stability across a wide range of mining applications.



Dams, Reservoirs & Hydropower

AVK offers specialised solutions for dams, reservoirs and hydropower systems, supporting large-scale water storage and energy generation. Our products ensure structural integrity, safe flow control and long-term durability under demanding conditions. With advanced materials and coatings, AVK solutions enhance performance, reduce risk and extend asset lifespan, helping operators maintain reliable, efficient infrastructure in critical water and energy applications.

OUR SEGMENTS IN AUSTRALIA & NEW ZEALAND



Irrigation

AVK provides tailored irrigation solutions enabling precise water distribution and efficient resource use across agriculture, landscaping and land rehabilitation. Our durable products perform reliably in diverse conditions, reducing water waste and improving productivity while supporting sustainable practices and consistent performance across projects of all sizes.



Chemical & Industrial Processes

AVK delivers solutions for demanding industrial environments involving aggressive media, high temperatures and pressure. Our products ensure durability, safety and efficient performance. With advanced materials and coatings, AVK reduces maintenance and downtime while maintaining operational integrity in industries requiring precision, resilience, and continuous production.



Building Services

AVK supplies high-quality valves and components for heating, cooling, potable water, and fire protection systems. Designed for durability and reliability, our products support efficient performance in residential and commercial buildings, helping maintain infrastructure integrity, reduce maintenance and ensure safe, comfortable environments.



Desalination

AVK provides corrosion-resistant solutions for desalination, supporting seawater treatment and freshwater production. Our products withstand saline conditions, chemical exposure and continuous operation, ensuring durability and reliability while enabling efficient processes, reduced maintenance and sustainable freshwater supply in water-scarce regions.



Power Generation

AVK delivers precision-engineered solutions for conventional and renewable power generation. Designed for high-pressure and high-temperature environments, our products ensure reliable performance and efficiency, supporting system stability, reducing maintenance and enabling consistent, sustainable power generation across diverse applications and operating conditions.

PARTNERSHIPS & QUALITY

Forging Long-Term Partnerships

At AVK, partnerships are built on trust, value, and consistent performance. Our experienced team collaborates closely with customers and stakeholders across the full project lifecycle, from concept to commissioning and beyond. We support infrastructure development and major projects across Australia and New Zealand. By combining strong local expertise with global capabilities, AVK delivers reliable, tailored solutions that meet complex requirements and foster long-term relationships built on performance, collaboration and proven results.



Quality in Every Step

AVK products are recognised globally for quality, durability and performance in demanding applications. Operating to strict Australian and New Zealand Standards, we apply rigorous quality control throughout manufacturing. All products are type-tested during design and undergo comprehensive inspection and functional testing during production. AVK Australia holds ISO 9001, ISO 14001 and ISO 45001 certifications, reflecting our commitment to quality, safety and environmental responsibility. With generous warranties and a design life exceeding 50 years, AVK ensures long-term reliability.

Build Your Customised Valve Solution

AVK offers comprehensive options to design valve solutions tailored to specific project requirements. Customers can select from a wide size and drill range, with suitable actuation and gearbox configurations. Additional customisation includes gate and seat types, materials and protective coatings with specified thicknesses. Optional features such as bypass systems, position indicators, torque overload protectors and extension spindles enhance performance. Detailed inspection and test plans ensure each solution meets specifications, delivering durability, reliability and efficient operation.



Quality
ISO 9001



Environment
ISO 14001



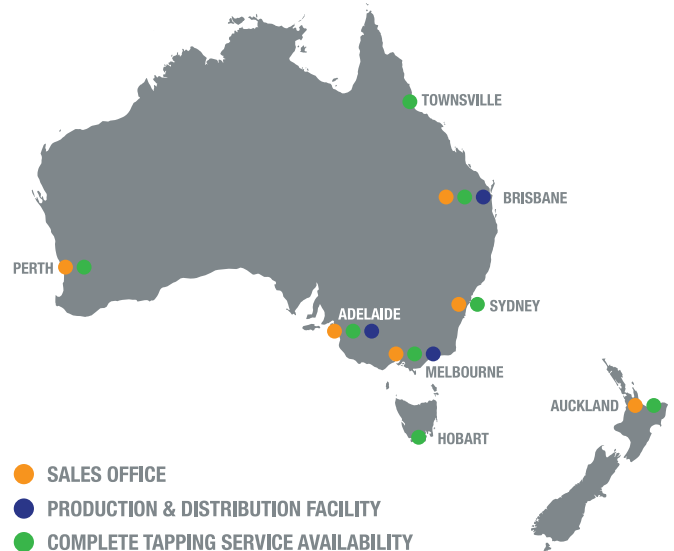
OHS
ISO 45001



FUTURE FOCUS & GOVERNANCE

Delivery To Market

Market proximity is a key strength for AVK, enabling close engagement with end users and a strong understanding of their needs. This allows continuous monitoring of market trends and quick adaptation to changing requirements. AVK's national distribution network ensures reliable delivery across Australia and New Zealand, helping keep projects on schedule and minimising downtime. Strategically located inventory supports fast response times and consistent service, reinforcing AVK's commitment to meeting customer expectations.



Product Development and Compliance

In cooperation with end users, AVK products are tested to achieve optimal results in each market. Compliance with local standards is embedded in all processes, ensuring every product meets required safety, quality and performance benchmarks. This approach supports reliable operation across a wide range of applications and diverse environments while maintaining consistent product excellence.

Economic and Environmental Sustainability

AVK continues to prioritise sustainability in both its operations and product delivery.

Our durable and efficient products are designed to support long-term infrastructure performance while reducing environmental impact. In doing so, AVK helps customers achieve both economic efficiency and their broader environmental sustainability goals.



END-TO-END CAPABILITIES

From initial design through final commissioning and lifecycle support, our EPC customers benefit from a fully integrated suite of capabilities —delivered by experienced teams and proven processes at every stage of the project.



PROJECT MANAGEMENT

- Dedicated project coordinators
- Structured technical reviews
- Single point of contact
- Detailed planning and scheduling
- Vendor and supplier management
- End-to-end project lifecycle control



ENGINEERING & DESIGN

- Detailed technical specifications
- Expert material selection
- In-house engineering and design
- Complete drawings and documentation
- FEA and CFD analysis
- 3D modelling and prototyping



MANUFACTURING EXPERTISE

- In-house CNC machining
- CNC lathes and skilled assembly
- Standards-compliant fabrication
- Shot blasting and coating
- Controlled quality processes
- Scalable production capability



INSPECTION, TESTING & TRACEABILITY

- Material identification verification
- Hydrostatic and NDT testing
- Dye penetration testing
- Third-party inspection support
- Type and production testing
- Full product traceability



DOCUMENTATION & COMMERCIAL SUPPORT

- Complete documentation packs
- Maintenance manuals
- International packing standards
- Product tagging and certification
- Certificates of conformance
- Commercial and compliance support



ON-SITE SUPPORT, SERVICE & MAINTENANCE

- Commissioning and start-up support
- Installation assistance
- On-site inspection and testing
- Troubleshooting and analysis
- Maintenance programs
- Spare parts and lifecycle support

OUR PRODUCT BRANDS IN AUSTRALIA & NEW ZEALAND

Over its years of operation in the industry, AVK has acquired the following Nationally and Internationally recognised brands that are now part of the AVK Group and contribute to our product package and solution offering.



The AVK brand is synonymous for delivering a high-quality range of products and solutions across Australia and New Zealand markets for over 20 years. Consisting of various large and small valves, hydrants, clamps, coupling and fittings installed in water distribution, water treatment works, mining and industrial, DRH and fire.



Orbinox have +50 years of experience within designing and manufacturing knife gate valves, penstocks, dampers, and valves for hydraulic work. They think globally, whilst applying their expertise locally in +70 countries. Offering technical expert advice and guidance is one of their important strengths.



Based in the rural city of Wangaratta, in Northeast Victoria, AVK Wang designs and manufactures quality repair and maintenance products consisting of couplings, repair clamps, tapping saddles and specialty products for pipelines in Australia and New Zealand. They know that when it comes to repair and maintenance, the best product is only part of the solution.



The SUREFLOW brand has been an integral part of national water network systems for +40 years. The brand offers ductile iron fittings, valves and hydrants all manufactured in accordance with relevant Australian Standards, ensuring they meet the requirements of national water and wastewater pipeline systems.



With +50 years of experience in developing and manufacturing PTFE-lined and elastomerlined butterfly valves, InterApp provides reliable solutions for the most demanding industries, applications and projects around the world. Their product portfolio also includes ball valves, check valves, actuators and accessories. In addition, the company offers a range of special valves and project capabilities to local contractors.



The Dutch company Wouter Witzel has been an international player for many years and develop and produce a wide range of high-quality industrial butterfly valves and accessories. Their products are primarily used in pipelines as shutoff valves, control valves and non-return valves

OUR PRODUCT BRANDS IN AUSTRALIA & NEW ZEALAND



ACMO designs and manufactures hydraulic equipment for water distribution, water transmission, irrigation and water treatment. Their excellence is supported by a high manufacturing capacity and innovative design skills made available to all our technological and institutional partners.



Glenfield are market leaders within their field and have been designing and manufacturing specialist engineered valves and penstocks for +160 years. Due to the superior quality, they offer some of the best extended warranties in the industry. The company is especially skilled within flood defence solutions and in specifying and managing the large dams, reservoirs and hydropower schemes.



The Croatian-based company with headquarters in Zagreb has +30 years of experience producing mainly high-performance ball and butterfly valves in various materials. In addition, the company offers a range of special valves and project capabilities to local contractors.



The Premier brand is well established in the water industry delivering quality products to the local market for over 60 years in water transmission lines, dams, reservoirs, hydropower and cooling water for coal power stations.



Founded in 1990, CYL Knife Valves is today a well-known company with 25 years of experience designing, manufacturing and selling knife gate valves. Thanks to a global network of agents and distributors, CYL products are present in over 50 countries.



The Brazilian company specialises in flow retention in basic/ industrial sanitation, water and wastewater treatment markets, and offers a variation of butterfly valves and check valves in different materials and characteristics for numerous types of applications.



ICV is the building services and HVAC solution provider of the AVK Group offering a broad range of products for buildings; from general valves, motorised valves, to balancing and hydraulic balancing valves.



Donkin gas valves and fittings have been used in the worldwide gas industry for over 170 years and are suitable for all types of pipe systems. Donkin have manufacturing facilities in Chesterfield in the UK.

OUR SERVICES

COMPLETE TAPPING SERVICE AUSTRALIA

As part of the AVK Australia Group, Complete Tapping Service is the leading company for under pressure tapplings in Australia.

Based in Keysborough, Victoria, CTS has been doing under pressure tapplings on water and wastewater mains for over 20 years.

CTS is an innovative support service for water authorities and contractors across Australia.

CTS also offers a line stopping service providing temporary shutdown solutions on mains from 80mm up to 500mm using their patented and in house developed AquaStop™ system and imported Hydra Stop system.



Complete Tapping Service only uses approved products on all jobs and complies with the WSAA Code of Practice for under pressure tapplings to ensure that our customers get the best possible outcome.

We are an approved contractor with Major water authorities as well as many smaller water authorities and local councils all around Australia.

No matter where your job is located, CTS has an office to service your needs.



HOW TO USE THE PRODUCT FINDER ON OUR WEBSITE



Water supply Wastewater treatment Fire protection Services & Information

Find product

Search

AVK Australia Civil / Product finder

Product finder

Filter

SHOW ALL FILTERS RESET ALL FILTERS COMPARE PRODUCTS

Use Product Technical specifications Standards and approvals

Segment Application Category Type Series

ie. item no., AVK ref. no., industry item no., variant or other

Results 297

AVK GATE VALVE, RESILIENT SEATED, PN16

AVK GATE VALVE, RESILIENT SEATED, PN16

AVK GATE VALVE, RESILIENT SEATED, PN16

AVK GATE VALVE, RESILIENT SEATED, PN16

On our website, avkcivil.com.au, you can browse through our current product offer and search out the exact product you need through the filtering options.

Segment and Application

In the “Use” filters you can select the overall segment or a specific application that the product should be used for.

Category, Type and Series

The “Product” filter lets you select either a category (broad search), a type or all the way down to a specific series (narrow search) to give you an easy overview of what we can offer.

Technical Specifications

Under “Technical Specifications” it is possible to apply filters regarding the desired PN class, Material, Pipe Type, Connection type, Nominal Diameter and Operating Direction.

Standards and Approvals

The “Standards and Approvals” filter makes it possible to search out products based on the desired Design Standard, Approvals, Face to Face standard and Flange Drilling standard.

RESILIENT SEATED GATE VALVES



**Series 570/90
Stem Cap**

- DN80-400
- Manufactured to the requirements of AS/NZS 2638.2
 - PN16 pressure rated
 - Fully vulcanised EPDM wedge with integral wedge nut
 - Stainless Steel Gland Flange
 - StandardsMark & WaterMark to AS/NZS 2638.2, positive WSAA Appraisal
 - Flange drillings to AS/NZS 4087 B5 or AS 2129 Table E
 - Anti clockwise and clockwise closures
- Options: Handwheel



**Series 570/92
ISO Mount**

- DN80-750
- Manufactured to the requirements of AS/NZS 2638.2
 - PN16 pressure rated
 - StandardsMark & WaterMark to AS/NZS 2638.2, positive WSAA Appraisal
 - Flange drillings to AS/NZS 4087 B5 or AS 2129 Table E
 - Anti clockwise and clockwise closures
- Options
- Gearbox & Actuation
 - Extension Spindles



**Series 570/98
Handwheel**

- DN80-400
- Manufactured to the requirements of AS/NZS 2638.2
 - PN16 pressure rated
 - Fully vulcanised EPDM wedge with integral wedge nut
 - StandardsMark & WaterMark to AS/NZS 2638.2, positive WSAA Appraisal
 - Flange drillings to AS/NZS 4087 B5 or AS 2129 Table E
 - Anti clockwise and clockwise closures



**Series 570/42
ISO Mount Bypass**

- DN450-750
- Manufactured to the requirements of AS/NZS 2638.2
 - PN16 pressure rated
 - StandardsMark & WaterMark to AS/NZS 2638.2, positive WSAA Appraisal
 - Flange drillings to AS/NZS 4087 B5 or AS 2129 Table E
 - Anti clockwise and clockwise closures
- Options
- Gearbox & Actuation
 - Extension Spindles



**Series 570/96
OS&Y with Handwheel**

- DN80-300
- Manufactured to the requirements of AS/NZS 2638.2
 - PN16 pressure rated
 - Fully vulcanised EPDM wedge with integral wedge nut
 - Approvals include StandardsMark & WaterMark to AS/NZS 2638.2, positive WSAA Appraisal, ActivFire listing
 - Flange drillings to AS/NZS 4087 B5 or AS 2129 Table E
 - Clockwise closure



**Series 570/91
Stem Cap**

- DN80-300
- Manufactured to the requirements of AS/NZS 2638.2
 - PN16 pressure rated
 - Fully vulcanised EPDM wedge with integral low lead wedge nut
 - Approvals include StandardsMark & WaterMark to AS/NZS 2638.2, positive WSAA Appraisal
 - Flange drillings to AS/NZS 4087 B5
 - Anti clockwise and clockwise closures



**Series 55/80
ISO Mount**

- DN800-1200
- Manufactured in accordance with AS/NZS 2638.2
 - PN16 pressure rated
 - Fully vulcanised EPDM wedge with integral wedge nut
 - Flange drillings to AS/NZS 4087 B5
 - Anti clockwise and clockwise closures
 - Bypass valve DN150
- Options
- Gearbox & Actuation
 - Extension Spindles



**Series 57/80
Stem Cap**

- DN50-300
- Manufactured in accordance with AS/NZS 2638.2
 - PN25 pressure rated
 - Fully vulcanised EPDM wedge with integral wedge nut
 - Flange drillings to AS/NZS 4087 B6
 - Anti clockwise and clockwise closures

RESILIENT SEATED GATE VALVES



**Series 57/86
OS&Y with Handwheel**

- DN80-300
- Manufactured in accordance with AS/NZS 2638.2
 - PN25 pressure rated
 - Fully vulcanised EPDM wedge with integral wedge nut
 - Flange drillings to AS/NZS 4087 B6
 - Clockwise closure



**Series 570/70
Stem Cap**

- DN80-150
- Manufactured to the requirements of AS/NZS 2638.2
 - PN16 pressure rated
 - Fully vulcanised EPDM wedge with integral wedge nut
 - StandardsMark & WaterMark to AS/NZS 2638.2, positive WSAA Appraisal
 - Socket end with choice of S1 or S2 Gaskets
 - Spigot end to AS/NZS 2280
 - Anti clockwise and clockwise closures
- Options: Handwheel



**Series 570/51
Stem Cap**

- DN80-300
- Manufactured to the requirements of AS/NZS 2638.2
 - PN16 pressure rated
 - Fully vulcanised EPDM wedge with integral low lead wedge nut
 - StandardsMark & WaterMark to AS/NZS 2638.2, positive WSAA Appraisal
 - Socket ends with choice of S1 or S2 Gaskets
 - Anti clockwise and clockwise closures



**Series 21/06
Stem Cap**

- DN50-300
- Super Duplex Body, Bonnet, Stem and Fasteners
- Other material options available
- PN16 pressure rated
 - Fully vulcanised EPDM wedge with integral low lead wedge nut
 - Flange drilling to AS/NZS 4087 B5 or AS 2129 Table E
 - Anti clockwise and clockwise closures
- Options: Handwheel



**Series 36/20
Stem Cap**

- DN80-300
- Manufactured to the requirements of AS/NZS 2638.2
 - PN16 pressure rated
 - Fully vulcanised EPDM wedge with integral wedge nut
 - Stainless Steel Gland Flange
 - StandardsMark & WaterMark to AS/NZS 2638.2, positive WSAA Appraisal
 - Pipe ends of PE100 SDR11 in sizes DN90-315
 - Anti clockwise and clockwise closures
- Options: Handwheel



**Series 01/91
Stem Cap**

- DN80-300
- Manufactured to the requirements of AS/NZS 2638.2
 - PN16 pressure rated
 - Fully vulcanised EPDM wedge with integral wedge nut
 - StandardsMark & WaterMark to AS/NZS 2638.2, positive WSAA Appraisal
 - Mechanical connection using Supa Plus technology for PE pipe DN90-315
 - Anti clockwise and clockwise closures
 - AVK support bush recommended



**Series 570/50
Stem Cap**

- DN80-375
- Manufactured to the requirements of AS/NZS 2638.2
 - PN16 pressure rated
 - Fully vulcanised EPDM wedge with integral wedge nut
 - Stainless Steel Gland Flange
 - StandardsMark & WaterMark to AS/NZS 2638.2, positive WSAA Appraisal
 - Socket ends with choice of S1 or S2 Gaskets
 - Anti clockwise and clockwise closures
- Options: Handwheel



**Series 570/60
Stem Cap**

- DN80-300
- Manufactured to the requirements of AS/NZS 2638.2
 - PN16 pressure rated
 - Fully vulcanised EPDM wedge with integral wedge nut
 - Stainless Steel Gland Flange
 - StandardsMark & WaterMark to AS/NZS 2638.2, positive WSAA Appraisal
 - Spigot ends to AS/NZS 2280
 - Anti clockwise and clockwise closures
- Options: Handwheel

METAL SEATED GATE VALVES



**Series 580/90
Stem Cap**

- DN80-300
- Manufactured to the requirements of AS//NZS 2638.1
 - PN16 pressure rated
 - Suitable for use with potable water and wastewater
 - StandardsMark & WaterMark to AS/NZS 2638.1, positive WSAA Appraisal
 - Flange drilling to AS/NZS 4087 B5
 - Anti clockwise and clockwise closures
- Options
- Handwheel



**Series 580/92
ISO Mount**

- DN80-900
- Manufactured to the requirements of AS/NZS 2638.1
 - PN16 pressure rated
 - Suitable for use with potable water and wastewater
 - StandardsMark & WaterMark to AS/NZS 2638.1, positive WSAA Appraisal
 - Shoe and Channel in sizes DN375-900 as standard
- Options
- Gearbox & Actuation
 - Extension Spindles



**Series 580/98
Handwheel**

- DN80-300
- Manufactured to the requirements of AS/NZS 2638.1
 - PN16 pressure rated
 - Suitable for use with potable water and wastewater
 - StandardsMark & WaterMark to AS/NZS 2638.1, positive WSAA Appraisal
 - Flange drilling to AS/NZS 4087 B5
 - Anti clockwise and clockwise closures



**Series 580/93
ISO Mount Bypass**

- DN375-1000
- Manufactured to the requirements of AS/NZS 2638.1
 - PN16 pressure rated
 - Suitable for use with potable water and wastewater
 - StandardsMark & WaterMark to AS/NZS 2638.1, positive WSAA Appraisal *DN1000 excluded
 - Shoe and Channel in sizes DN375-1000 as standard
- Options
- Gearbox & Actuation
 - Extension Spindles



**Series 580/80
Stem Cap**

- DN80-300
- Manufactured to the requirements of AS/NZS 2638.1
 - PN35 pressure rated
 - Suitable for use with potable water and wastewater
 - StandardsMark & WaterMark to AS/NZS 2638.1, positive WSAA Appraisal
 - Flange drilling to AS/NZS 4087 B6
 - Anti clockwise and clockwise closures
- Options
- Handwheel



**Series 580/82
ISO Mount**

- DN80-600
- Manufactured to the requirements of AS/NZS 2638.1
 - PN35 pressure rated
 - Suitable for use with potable water and wastewater
 - StandardsMark & WaterMark to AS/NZS 2638.1, positive WSAA Appraisal
 - Flange drillings to AS/NZS 4087 B6
 - Shoe and Channel in sizes DN375-600 as standard
- Options
- Gearbox & Actuation
 - Extension Spindles



**Series 580/88
Handwheel**

- DN80-300
- Manufactured to the requirements of AS/NZS 2638.1
 - PN35 pressure rated
 - Suitable for use with potable water and wastewater
 - StandardsMark & WaterMark to AS/NZS 2638.1, positive WSAA Appraisal
 - Flange drillings to AS/NZS 4087 B6
 - Anti clockwise and clockwise closures



**Series 580/83
ISO Mount Bypass**

- DN375-600
- Manufactured to the requirements of AS/NZS 2638.1
 - PN35 pressure rated
 - Suitable for use with potable water and wastewater
 - StandardsMark & WaterMark to AS/NZS 2638.1, positive WSAA Appraisal
 - Flange drillings to AS/NZS 4087 B6
 - Shoe and Channel as standard
- Options
- Gearbox & Actuation
 - Extension Spindles

METAL SEATED GATE VALVES



**Series 400
ISO Mount**

DN750-1000

- Manufactured to the requirements of AS/NZS 2638.1
- PN35 pressure rated
- Suitable for use with potable water and wastewater
- StandardsMark to AS/NZS 2638.1 *excludes DN1000
- Flange drillings to AS/NZS 4087 B6
- Shoe and Channel as standard
- Options
 - Gearbox & Actuation
 - Extension Spindles
 - Bypass



**Series 37/46
Handwheel**

DN50-300

- OS&Y design
- PN16 pressure rated
- Suitable for use with potable water and wastewater
- Flange drillings to AS/NZS 4087B5
- A4 Stainless Steel fasteners
- Stuffing box for re-tightening of o-rings and gland
- SS316 stem
- Clockwise close



**Series 580/49
Handwheel**

DN100-150

- Shouldered ends
- Manufactured to the requirements of AS/NZS 2638.1
- PN35 pressure rated
- Suitable for use with potable water and wastewater
- StandardsMark & WaterMark to AS/NZS 2638.1
- Flange drillings to AS/NZS 4087 B6
- Anti clockwise and clockwise closures



Series 54 ISO Mount

DN1200-1600

- Manufactured in accordance with AS/NZS 2638.1
- PN16 pressure rated
- Suitable for use with potable water and wastewater
- EN1092 flanges with flange drillings to AS/NZS 4087 B5
- Shoe and Channel as standard
- Options
 - Gearbox & Actuation
 - Extension Spindles
 - Bypass



KNIFE GATE VALVES



ET Uni-directional

- DN50-900
- Manufactured to MSS SP-81 and AS 6401
 - PN7-PN10 pressure rated
 - Rising stem and handwheel
 - NBR seat/liner
 - StandardsMark to AS 6401 (pending)
 - Flange drilling to AS2129 Table E and AS/NZS 4087 B5
 - Clockwise close, ACC available
- Options
- Metal seat
 - Gearbox, electric actuator and pneumatic cylinder
 - Non rising stem



BT Bi-directional

- DN50-900
- Manufactured to MSS SP-81 and AS 6401
 - PN7-PN10 pressure rated
 - Rising stem and handwheel
 - NBR seat/liner
 - StandardsMark to AS 6401 (pending)
 - Flange drilling to AS2129 Table E and AS/NZS 4087 B5
 - Clockwise close, ACC available
- Options
- Metal seat
 - Gearbox, electric actuator and pneumatic cylinder
 - Non rising stem



WG Heavy Duty Slurry

- DN80-900
- Ductile Iron or Stainless Steel body
 - Dual metal reinforced rubber sleeves
 - Bi-directional valve
 - Full flanged
 - Pressure rated to PN10, higher on request
 - Flange connection EN1092, ASME B16.5 (class 150)
- Options
- Gearbox, electric actuator and pneumatic cylinder



HG High Pressure Heavy Duty

- DN80-900
- Ductile Iron body
 - Dual metal reinforced rubber sleeves
 - Bi-directional valve
 - Full flanged
 - Pressure rated to PN51 (740 PSI)
 - Flange connection EN1092, ASME B16.5 (class 300)
- Options
- Gearbox, electric actuator and pneumatic cylinder
 - Drilling patterns



VG Wafer Style Slurry

- DN50-900
- Ductile Iron body, wafer design
 - Dual metal reinforced rubber sleeves
 - Bi-directional valve
 - Pressure rated from PN5-PN10
 - Flange connection EN1092, ASME B16.5 (class 150)
- Options
- Gearbox, electric actuator and pneumatic cylinder



HB High Pressure

- DN80-600
- Ductile Iron body, wafer design
 - Metal seat
 - Bi-directional valve
 - Pressure rated from PN16-PN20
 - Flange connection EN1092, ASME B16.5 (class 150)
- Options
- Gearbox, electric actuator and pneumatic cylinder
 - Tungsten carbide coating and wear rings



EP Polyurethane Lined

- DN80-600
- Ductile Iron body, lugged design
 - Polyurethane lining
 - Bi-directional valve
 - Stainless Steel gate
 - Pressure rated PN10
- Options
- Gearbox, electric actuator and pneumatic cylinder



PA Heavy Duty Slurry Pinch Valve

- DN25-300
- Ductile Iron cast split body
 - Full bore
 - Elastomer sleeves for double pinch shut off
 - Pressure rated from PN6-PN10
 - Flange connection EN1092, ASME B16.5 (class 150)
- Options
- Manual and pneumatic

BUTTERFLY VALVES



**Series 756/242
Double Eccentric
Seal on Disc**

- DN150-1200
- Manufactured in accordance with AS4795.2
 - PN16 pressure rated
 - Stainless Steel Duplex shafts
 - Stainless Steel 316 seat ring and fasteners
 - EPDM Rubber seal
 - Flange Drilling to AS/NZS 4087 B5
 - IP68 Gearbox
- Options
- Actuator
 - Extension Spindles & Accessories
 - Locking Device
 - Valves to DN2200



**Series 756/142
Double Eccentric
Seal on Disc**

- DN150-1200
- Manufactured in accordance with AS4795.2
 - PN25 pressure rated
 - Stainless Steel Duplex shafts
 - Stainless Steel 316 seat ring and fasteners
 - EPDM Rubber seal
 - Flange Drilling to AS/NZS 4087 B6
 - IP68 Gearbox
- Options
- Actuator
 - Extension Spindles & Accessories
 - Locking Device



**Series 76/70
Concentric
BFV Wafer**

- DN50-600
- Manufactured to the requirements of AS4795.1
 - PN16 pressure rated
 - Stainless Steel 316 Disc
 - Liner of EPDM Rubber
 - Flanging to suit AS2129 Table E & AS/NZS 4087 B5
 - Approvals include StandardsMark & WaterMark to AS4795.1
- Options
- Lever, gearbox and actuation
 - NBR liner
 - ANSI & EN1092 drillings
 - Stainless Steel body



**Series 76/71
BFV Lugged**

- DN50-600
- Manufactured to the requirements of AS4795.1
 - PN16 pressure rated
 - Stainless Steel 316 Disc
 - Liner of EPDM Rubber
 - Flanging to suit AS2129 Table E & AS/NZS 4087 B5
 - Approvals include StandardsMark & WaterMark to AS4795.1
- Options
- Lever, gearbox and actuation
 - NBR liner
 - ANSI & EN1092 drillings
 - Stainless Steel body



**Series 75/62 Concentric
Seal on Body**

- DN50-1200
- Manufactured in accordance with AS4795.2
 - PN16 pressure rated
 - Stainless Steel Duplex Stem and Disc
 - Vulcanised Liner of EPDM Rubber
 - Flange drilling to AS/NZS 4087 B5, other patterns available
- Options
- Gearbox and actuation
 - Materials
 - Lugged valves



S75 Lugged

- DN50-600
- Ductile Iron body
 - Stainless Steel Duplex Stem and Disc
 - Vulcanised Liner of EPDM Rubber
 - PN16 pressure rated
 - AS/NZS 4087 drilling
- Options
- Gearbox and actuation
 - Drilling patterns



**S75
Wafer**

- DN50-600
- Ductile Iron body
 - Stainless Steel Duplex Stem and Disc
 - Vulcanised Liner of EPDM Rubber
 - PN16 pressure rated
 - AS/NZS 4087 drilling
- Options
- Gearbox and actuation
 - Drilling patterns



EVUS U-Section

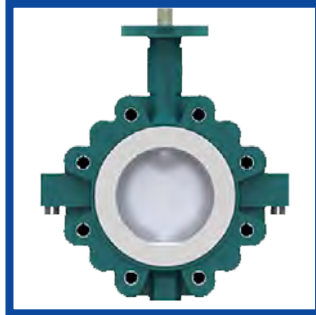
- DN600-2200
- Ductile Iron body
 - Duplex disc
 - Vulcanised Liner of EPDM Rubber
 - AS/NZS 4087 drilling
 - EN558-1 Series 20 face to face
- Options
- Gearbox and actuation

BUTTERFLY VALVES



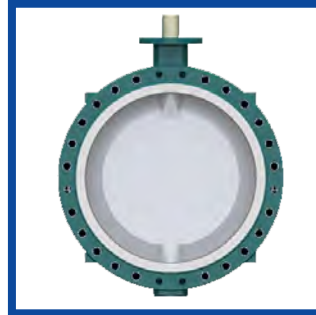
Bianca Wafer B1

- DN32-600
 - Ductile Iron two-piece body
 - Stainless PFA coated disc
 - One piece disc and shaft
 - PTFE Liner
- Options
- Various disc materials
 - Cleaned high purity
 - Stainless body
 - FDA
 - Ultraflon liner
 - Actuation



Bianca Centric Butterfly Valve

- DN32-400
 - Ductile Iron two-piece body
 - Stainless PFA coated disc
 - One piece disc and shaft
 - PTFE Liner
- Options
- Various disc materials
 - Cleaned high purity
 - Stainless body
 - FDA
 - Ultraflon liner
 - Actuation



Bianca U-Section B4

- DN450-900
 - Ductile Iron two-piece body
 - Stainless PFA coated disc
 - One piece disc and shaft
 - PTFE Liner
- Options
- Various disc materials
 - Cleaned high purity
 - Stainless body
 - FDA
 - Ultraflon liner
 - Actuation



Ultralene

- Superior material characteristics
- Excellent wear and chemical resistance
- High impact strength
- Anti adhesion and self lubrication
- Low moisture absorption
- Low friction coefficient



FM Approved Fire Products

- UL & FM approved valves
- Gate Valves flanged
- Gate Valves roll groove
- Butterfly Valves roll groove
- Butterfly Valves double flanged, lugged and wafer pattern
- Check Valves flanged
- Check Valves roll groove



Dynaxe Double Flanged

- DN50-900
- CI 150
- Body carbon steel or CF8M
- Duplex or Titanium options
- Higher pressure ratings
- Multiple drill patterns



Elara Double Eccentric

- DN50-600
 - High performance valve
 - CI150-300 pressure rated
 - Multiple body, shaft, disc and seat material options available
 - Temperature performance 10°C to 400°
- Options
- Gearbox and actuation
 - Materials



Triple Offset

- DN80-2400
 - High performance metal seated valve
 - CI150-1500 pressure rated
 - Wafer, lugged and double flange options available
 - Temperature performance 200°C to 815°C
- Options
- Gearbox and actuation
 - Materials

CHECK VALVES



**Series 41/80
Closed Bush
Swing Check**

DN80-300

- Manufactured to the requirements of AS4794
 - PN16 pressure rated
 - DI disc fully vulcanised with EPDM Rubber
 - Flange Drilling to AS/NZS 4087 B5 or AS2129 Table E
 - StandardsMark & WaterMark to AS4794
 - Suitable for horizontal or vertical installation, and buried service.
- Options
- NBR Rubber Disc



**Series 41/81
Free Acting
Swing Check**

DN80-300

- Manufactured to the requirements of AS4794
 - PN16 pressure rated
 - DI disc fully vulcanised with EPDM Rubber
 - Flange Drilling to AS/NZS 4087 B5 or AS2129 Table E
 - StandardsMark & WaterMark to AS4794
 - Suitable for horizontal or vertical installation
- Options
- NBR Rubber Disc
 - Leave & weight



**Series 41/82
Lever & Weight
Swing Check**

DN80-300

- Manufactured to the requirements of AS4794
 - PN16 pressure rated
 - DI disc fully vulcanised with EPDM Rubber
 - Flange Drilling to AS/NZS 4087 B5 or AS2129 Table E
 - StandardsMark & WaterMark to AS4794
- Options
- Limit or Proximity Switch and Cam
 - Safety Guard



**Series 41/36
Lever & Weight
Swing Check**

DN350-400

- Manufactured in accordance with AS4794
 - PN16 pressure rated
 - Aluminium Bronze seat and face rings
 - Flange Drilling to AS/NZS 4087 B5
- Options
- Limit or Proximity Switch and Cam
 - Safety Guard
 - Face to face according to EN558-2, Series 48



**Series 41/F6 Lever &
Weight Swing Check**

DN350-600

- Manufactured in accordance with AS4794
- PN16 pressure rated
- Aluminium Bronze seat and face rings
- Flange Drilling to AS/NZS 4087 B5
- Fitted with Lever & Weight, IP68 Proximity Switch and Safety Guard
- Face to face according to AS 4794



**Series 641/21
Recoil Check**

DN600-1600

- Fast acting non slam multi door check valve
 - Inclined seat angle to reduce disc travel
 - PN16 pressure rated
 - Flange Drilling to AS/NZS 4087 B5, AS2129 Table D or EN1092 PN10/16
 - Stainless Steel 316 Hinge components
- Options
- Proximity Switch
 - Materials



**Series 641/23
Recoil Check**

DN600-1400

- Fast acting non slam multi door check valve
 - Inclined seat angle to reduce disc travel
 - PN25 pressure rated
 - Flange Drilling to AS/NZS 4087 B6, AS2129 Table F or EN1092 PN25
 - Stainless Steel 316 Hinge components
- Options
- Proximity Switch
 - Materials



**Series 53/50
Ball Check**

DN80-300

- PN16 pressure rated
 - NBR Rubber ball
 - Self-cleaning construction
 - Flange Drilling to AS/NZS 4087 B5
 - Suitable for horizontal or vertical installation
- Options
- Polyurethane Ball
 - Weighted ball options

CHECK VALVES



**Series 903
Silent Check**

- DN100-400
- Metal seated spring assisted closure
 - PN16 pressure rated
 - Flange drilling to AS 2129 Table E or AS/NZS 4087 B5
 - Fast closing, low friction design mitigates slamming
 - Available with SS316 body



Series 927 Flex Check

- DN80-800
- Ideal for sewage and wastewater applications
 - NBR flexible disc
 - One piece body for maximum strength
 - PN16 pressure rated
 - Flange drilling to AS/NZS 4087 B5



Series 1410 Tilting Disc

- DN40-900
- PN10/25/40 pressure ratings available
 - Metal seat
 - Wafer design
 - Low opening pressure
 - Stainless steel construction
 - Lever and weight available



**STCV Single Flap
Swing Check**

- DN150-300
- PN10/16 pressure ratings available
 - PFA Lined
 - Body in cast steel



CONTROL VALVES



**Series 859
Pressure Reducing**

- DN65-600
- Reduced or Full Bore
 - PN16 pressure rated
 - Stainless Steel 316 Distribution Block and Piping
 - Potable Water approved EPDM rubber diaphragm
 - Lifted seat to avoid damage due to cavitation
 - Multiple pilot pressure range options available
 - Flange Drilling to AS/NZS 4087 B5
 - All non coated internals made of SS 316



Series 859 Pressure Sustaining / Relief

- DN65-600
- Reduced or Full Bore
 - PN16 pressure rated
 - Stainless Steel 316 Distribution Block and Piping
 - Potable Water approved EPDM rubber diaphragm
 - Lifted seat to avoid damage due to cavitation
 - Multiple pilot pressure range options available
 - Flange Drilling to AS/NZS 4087 B5
 - All non coated internals made of SS 316



**Series 859
Constant Flow**

- DN65-600
- Reduced or Full Bore
 - PN16 pressure rated
 - Stainless Steel 316 Distribution Block and Piping
 - Potable Water approved EPDM rubber diaphragm
 - Lifted seat to avoid damage due to cavitation
 - Multiple pilot pressure range options available
 - Flange Drilling to AS/NZS 4087 B5
 - All non coated internals made of SS 316



**Series 859
One-Way Altitude**

- DN65-300
- Reduced or Full Bore
 - PN16 pressure rated
 - Stainless Steel 316 Distribution Block and Piping
 - Potable Water approved EPDM rubber diaphragm
 - Lifted seat to avoid damage due to cavitation
 - Multiple pilot pressure range options available
 - Flange Drilling to AS/NZS 4087 B5
 - All non coated internals made of SS 316



**Series 872
Needle Valve**

- DN80-1600
- One piece body construction
 - PN16/25/40 pressure rated
 - Symmetrical flow path ensures even distribution around seat
 - Low operating torque
 - Flange drilling to AS/NZS 4087 B5, other patterns available
 - Main seal mounted on piston
 - 4-6 guide rails
 - Anti cavitation trim available
 - Polyurethane gaskets for high abrasion resistance
 - Duplex shaft and piston



CH Discharge Valve

- DN400-3500
- Cone valve offers excellent regulation and high volume discharge
 - PN16 pressure rated
 - Stainless steel body and sleeve available in multiple grades
 - Low operating torque suited for manual, electric or hydraulic actuation
 - EPDM seal
 - Driven via two parallel hydraulic cylinders mounted horizontally



**S857 Fixed Cone
Discharge Valve**

- DN400-2200
- High volume discharge
 - One piece body construction
 - PN16 pressure rated
 - Hydraulically balanced with no differential loads
 - Low operating torque
 - Replaceable sealing ring
 - Fine screw thread for slow speed operation and fine adjustment
 - Can be operated with small actuator



**S856 Submerged
Discharge Valve**

- DN200-1600
- High volume discharge
 - PN16/25 pressure rated
 - Hydraulically balanced with no differential loads
 - Low operating torque
 - Resilient seal for drop tight shut off
 - Cavitation free
 - Fine screw thread for slow speed operation and fine adjustment
 - Can be operated with small actuator

AIR VALVES



Series 851/00 Air Valve

- DN25
- Air relief valve
 - 1" BSPF connection
 - ABS Float
 - EPDM Seal
 - PN16 pressure rated



Series 851/X0 Air Valve

- DN50-150
- Double Orifice air relief valve
 - Releases large volumes of air during pipe fill and allows air inflow during pipe evacuation
 - Flange dimensions to AS/NZS Table D
 - PN16 pressure rated
 - Low maintenance
 - Coating to AS/NZS 4158
 - ABS Float
 - EPDM seals



Series 851/X0 Air Valve

- DN50-150
- Double Orifice air relief valve
 - Releases large volumes of air during pipe fill and allows air inflow during pipe evacuation
 - Flange dimensions to AS/ NZS Table F
 - PN25 pressure rated
 - Low maintenance
 - Coating to AS/NZS 4158
 - ABS Float
 - EPDM seals



Series 851/50 Air Valve

- DN80
- Wastewater air relief valve
 - Triple action
 - Large float chamber keeps contaminated water from working components
 - Large air flow capacity
 - ABS Float
 - EPDM Seals
 - Flange connection to AS/ NZS 4087 B5
 - Float elevator SS316
 - PN16 pressure rated



BALL & CHEMICAL SERVICE VALVES



1, 2, 3 Piece Ball Valves

- DN8-100
- 10000 PSI
- Stainless Steel 316 Body
- BSP connections
- PTFE seat
- Lockable lever



Floating Ball Valves

- DN15-300
- Class150-300
- Stainless Steel 316 Body
- Various material and design options
- AS/NZS 4087 drillings + AS2129 Table E
- ISO Mount



Specialty Metal Ball Valves

- Multiple design and pressure range options



Actuated Stainless Steel Valves

- Stainless Steel & Plastic Options
- Pneumatic or Electric
- Multiple sizes available



PFA Lined TLBVH23 Ball Valve

- DN15-100
- Three piece body construction
- PN16 pressure rated
- Full Bore
- Carbon steel body
- PFA lining on body and stem
- PTFE ball
- -50°C to 180°C
- Anti static option



PFA Lined FPCV Flanged Poppet Check

- DN25-100
- Full Bore
- Carbon steel body
- PFA lining on body
- Hastelloy spring
- PTFE poppet
- -50°C to 180°C
- Conductive PFA option
- Stainless steel body option
- Alternate springs

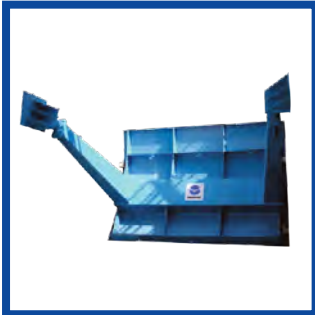


PFA Lined TLBCV Flanged Ball Check

- DN15-100
- Three piece body construction
- PN16 pressure rated
- Full Bore
- Carbon steel body
- PFA anti static lining on body
- PTFE anti static ball
- -50°C to 180°C
- Ceramic ball option



OTHER VALVES



**CT
Radial Gate**

- Up to 20000 x 7000
- Pivoting "taintor" type radial gate
- Carbon or stainless steel fabricated gate
- Three or Four side sealing
- Elastomer seals
- Hydraulic or electric actuation



**MV
Roller Gate**

- Up to 6000 x 8000
- Flat rectangular design
- PN10 pressure rated
- Carbon Steel fabricated gate
- Roller system for guiding purposes
- Elastomer seals
- Hydraulic or electric actuation
- Bypass option available



**Series 772
Penstocks**

- DN200-4000
- Three and Four side sealing
- Pressure rating 4 sided = PN1 on / PNO.6 off, 3 sided = gate height
- Stainless Steel full frame and gate
- EPDM seals with self adjusting design
- HMWPE guides
- Various actuation options available - manual, electric, pneumatic or hydraulic
- Factory assembled and tested



**Series 772
Stop Log**

- Up to 3500 x 3500
- Stainless Steel modular construction with alternate material options available e.g. Duplex
- Wall mounted, face mounted or embedded in concrete
- Stainless steel fasteners
- Bi-directional self adjusting seal
- Each log has vertical and horizontal seals to prevent leaks between logs
- Lifting devices available



**Series 1426
Bonneted Gate**

- 2500 x 3500
- Carbon or Stainless Steel fabricated body and gate
- Bronze seat
- Pressure rated to PN20
- Hydraulic or electric actuation



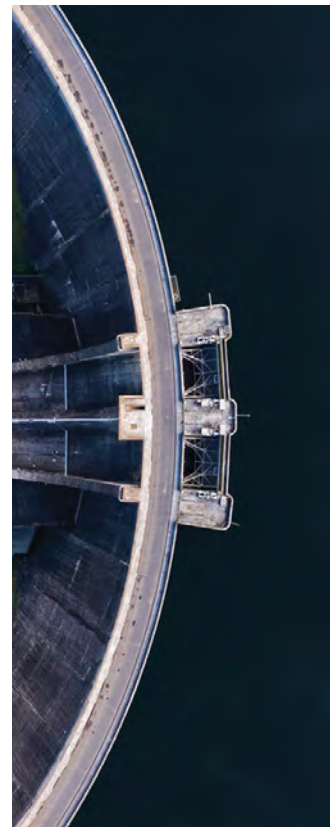
**Series 1432 High
Pressure Knife Gate**

- Up to DN3500
- Bonneted valve
- Carbon or Stainless Steel fabricated body and gate
- Elastomer or Bronze seat
- Pressure rated to PN20
- Hydraulic or electric actuation

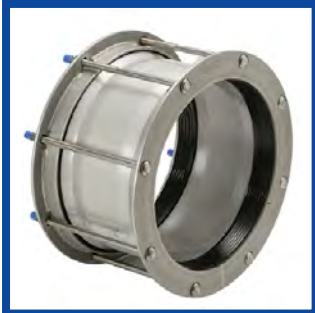


**Series 764
Plug Valve**

- DN80-300
- Quarter turn eccentric valve
- Suitable for isolation and throttling applications
- Welded nickel seat
- NBR plug
- A4 fasteners
- Full flow
- PN16 pressure rated
- Fusion bonded to AS 4158
- ISO Mount for fitment of actuator options



COUPLINGS AND ADAPTORS



**Series 601
Supa Gib
Coupling, Straight**

- DN40-1200
- PN16 pressure rated to DN675
 - PVC, AC, CI, DI and copper pipes
 - NBR Seal
 - FC/FC, FC/SS, SS/SS construction
 - Non-Tensile
 - StandardsMark to AS/NZS 4998, WSAA appraisal



**Series 602 Supa Gib
Coupling, Stepped**

- DN40-600
- PN16 pressure rated
 - PVC, AC, CI, DI and copper pipes
 - FC/FC, FC/SS, SS/SS construction
 - NBR Seal
 - Non-Tensile
 - StandardsMark to AS/NZS 4998, WSAA appraisal



**Series 603
Supa Gib
Flange Adaptor**

- DN80-600
- PN16 pressure rated
 - PVC, AC, CI, DI and copper pipes
 - NBR Seal
 - FC/FC, FC/SS, SS/SS construction
 - Non-Tensile
 - StandardsMark to AS/NZS 4998, WSAA appraisal



**Series 605
Supa Gib
End Cap**

- DN100-600
- PN16 pressure rated
 - PVC, AC, CI, DI and copper pipes
 - NBR Seal
 - FC/FC, FC/SS, SS/SS construction
 - Non-Tensile
 - StandardsMark to AS/NZS 4998, WSAA appraisal



**Series 621
Supa Plus
Coupling, Straight**

- DN80-300 (PE 90-315)
- PN16 pressure rated
 - EPDM Seal
 - Tensile Restraint for HDPE
 - Connection StandardsMark and WaterMark approved to AS/NZS 4129
 - Ductile Iron construction



**Series 623
Supa Plus
Flange Adaptor**

- DN80-300 (PE 90-315)
- PN16 pressure rated
 - EPDM Seal
 - Tensile Restraint for HDPE
 - Connection StandardsMark and WaterMark approved to AS/NZS 4129
 - Universal drilling
 - Ductile Iron construction



**Series 631
Supa Maxi,
Coupling, Straight**

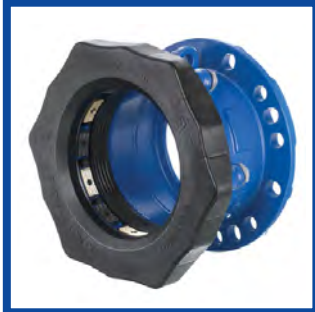
- DN50-600
- PN16 pressure rated
 - EPDM Seal
 - Universal and Tensile for all pipe types
 - Ductile Iron construction
 - WSAA appraisal
 - Gunmetal & Stainless Steel gripping inserts



**Series 632
Supa Maxi,
Coupling, Stepped**

- DN50-300
- PN16 pressure rated
 - EPDM Seal
 - Universal and Tensile for all pipe types
 - Ductile Iron construction
 - WSAA appraisal
 - Gunmetal & Stainless Steel gripping inserts

COUPLINGS AND ADAPTORS



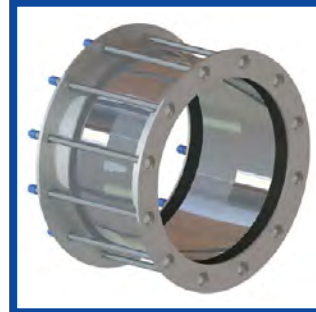
**Series 633
Supa Maxi
Flange Adaptor**

- DN50-600
- PN16 pressure rated
- EPDM Seal
- Universal and Tensile for all pipe types
- Ductile Iron construction
- WSAA appraisal



**Series 634
Supa Maxi
End Cap**

- DN50-400
- PN16 pressure rated
- EPDM Seal
- Universal and Tensile for all pipe types
- Ductile Iron construction
- WSAA
- Gunmetal & Stainless Steel gripping inserts



**Series 258
Supa Gib Coupling
High Pressure**

- DN100-450
- PN35 pressure rated
- Full SS316 Construction
- NBR Seal
- Non-Tensile Options
- Larger sizes available to DN2000
- Ductile Iron Construction



**Series 258
Supa Gib Coupling
High Pressure**

- DN100-450
- PN35 pressure rated
- Full SS316 Construction
- NBR Seal
- Non-Tensile Options
- Larger sizes available to DN2000
- Ductile Iron Construction



REPAIR AND OFFTAKE CLAMPS

MADE IN AUSTRALIA



**Series 748/90
Repair Clamp**

- DN40-1100
- PN16 pressure rated
 - Stainless Steel construction
 - Single, Double & Multi part
 - NBR Mat
 - StandardsMark & WaterMark to AS4181, WSAA appraisal



**748/91
Flanged Clamp**

- DN100-1000
- PN16 pressure rated to DN450
 - Stainless Steel construction
 - Flange drilling, AS/NZS 4087 B7 standard
 - Other drilling available on request
 - NBR Mat
 - StandardsMark & WaterMark to AS4181, WSAA appraisal



**748/92
Tapped Clamp**

- DN40-900
- PN16 pressure rated to DN450
 - Stainless Steel construction
 - BSP Tapping standard
 - Other thread types available on request
 - NBR Mat
 - StandardsMark & WaterMark to AS4181, WSAA appraisal



**748/93
Sewer
OB Junction**

- DN100-500
- PN1 pressure rated
 - Stainless Steel construction
 - PVC branch
 - 45° or 90°
 - NBR Mat



**Series 748/90-91-92
HDPE Clamps**

- DN50-1000
- PN16 pressure rated to DN560
 - Repair, flanged, tapped
 - Stainless Steel construction
 - Clamp length = pipe dia x 1.5
 - For HDPE pipes SDR 13.6 or greater
 - PTFE coated nut to prevent galling



**Series 206/51
Repair Clamp, Kwik**

- DN15-50
- PN16 pressure rated
 - Stainless Steel body
 - Ductile Iron lugs
 - Stainless Steel or Gal nuts and bolts
 - Available in 150mm or 75mm length
 - Full circle sealing



TAPPING SADDLES

MADE IN
AUSTRALIA



**Series 10/81
Tapping Saddle**

- DN40-450
- PN16 pressure rated
- Stainless Steel construction
- Rigid pipe types
- NBR Seal
- EPDM backing
- 1 and 4 bolt
- StandardsMark & WaterMark to AS4793



**Series 10/71
Tapping Saddle**

- DN100-150
- PN16 pressure rated
- Ductile Iron construction
- Flexible and Rigid pipe types
- NBR seal
- StandardsMark & WaterMark to AS4793, WSAA appraisal



**Series 740/51
Tapping Saddle**

- DN100-DN150
- PN16 pressure rated
- Ductile Iron construction
- Stainless Steel back strap
- Rigid pipe types
- EPDM seal



**Series 10/6X
Offtake Saddle**

- DN100-DN150
- PN16 pressure rated
- Ductile Iron construction
- Suitable for S2 PVC
- Suitable for DN125 or DN180 PE
- DN80/100/150 flange offtakes with AS2129 TD/E drilling
- A4 fasteners
- NBR seal



HYDRANTS

MADE IN AUSTRALIA



**Series 29/00
Isolation Valve**

- DN80-100
- Outlet Flange DN80 or DN100
 - Inlet Flange Slotted DN80/100
 - Flange Drilling to AS/NZS 4087 B5
 - Epoxy Coated to AS/NZS 4158
 - PN16
 - EPDM plug
 - Anti clockwise and clockwise closures



**Series 29/010
Hydrant, SA**

- DN80
- Flange Drilling AS/NZS 4087 B5
 - Epoxy Coated to AS/NZS 4158
 - PN16
 - EPDM Plug
 - Clockwise Close



**Series 29/088
Hydrant, WA**

- DN100
- Flange Drilling AS/NZS 4087 B5
 - Epoxy Coated to AS/NZS 4158
 - Stainless Steel Gland Flange
 - PN16
 - EPDM Plug
 - Clockwise Close



**Series 29/288
Hydrant, NT**

- DN100
- Flange Drilling AS/NZS 4087 B5
 - Epoxy Coated to AS/NZS 4158
 - Stainless Steel Outlet
 - PN16
 - EPDM Plug
 - Clockwise Close



**Series 29/588
Hydrant Squat, NZ**

- DN80
- Manufactured in accordance with NZS 4522
 - SMK certified to NZS 4522
 - Flange Drilling AS/NZS 4087 B5
 - Stainless Steel Outlet
 - PN16
 - EPDM Plug
 - Clockwise Close



**Series 29/589
Hydrant Tall, NZ**

- DN80
- Manufactured in accordance with NZS 4522
 - SMK certified to NZS 4522
 - Flange Drilling AS/NZS 4087 B5
 - Stainless Steel Outlet
 - PN16
 - EPDM Plug
 - Clockwise Close



**Series 30/00
Spring Hydrant**

- DN80-100
- Manufactured in accordance with AS 3952
 - StandardsMark & WaterMark to AS 3952, positive WSAA Appraisal
 - Inlet Flange DN80, DN100 or Slotted DN80/100
 - Flange Drilling to AS/NZS 4087 B5
 - PN16
 - EPDM Rubber Seat
 - DZR Copper Alloy piston Option
 - Lilac Yoke



**Series 30/10
SWAB Hydrant**

- DN80-100
- Manufactured in accordance with AS 3952
 - StandardsMark & WaterMark to AS 3952, positive WSAA Appraisal
 - Inlet Flange DN80, DN100 or Slotted DN80/100
 - Flange Drilling to AS/NZS 4087 B5
 - Removable internal components for direct pipeline access
 - PN16
 - EPDM Rubber Seat
 - DZR Copper Alloy piston Option
 - Lilac Yoke

FITTINGS



**Series 718/0X40
Socket Bend**

- DN100-750
- Manufactured in accordance with AS/NZS 2280
 - PN35 pressure rated
 - 6°, 11.25°, 22.5°, 45° & 90°
 - Socket ends with S2 Gaskets
 - S1 Gasket optional
 - StandardsMark & WaterMark to AS/NZS 2280, WSAA Appraisal



**Series 718/0X10
Flange Bend**

- DN80-750
- Manufactured in accordance with AS/NZS 2280
 - PN16/35 pressure rated
 - 11.25°, 22.5°, 45° & 90°
 - Drilling to AS/NZS 4087 B5 & B6
 - StandardsMark & WaterMark to AS/NZS 2280, WSAA Appraisal



**Series 718/0X01
Spigot Bend**

- DN100-150
- Manufactured in accordance with AS/NZS 2280
 - PN16 pressure rated
 - 11.25°, 22.5°, 45° & 90°
 - StandardsMark & WaterMark to AS/NZS 2280, WSAA Appraisal



**Series 718/1040
Socket Tee**

- DN100-750
- Manufactured in accordance with AS/NZS 2280
 - PN35 pressure rated
 - Equal & Reduction Tees
 - Socket ends with S2 Gaskets
 - S1 Gasket optional
 - StandardsMark & WaterMark to AS/NZS 2280, WSAA Appraisal



**Series 718/1010
Flange Tee**

- DN80-750
- Manufactured in accordance with AS/NZS 2280
 - PN16/35 pressure rated
 - Equal & Reduction Tees
 - Drilling to AS/NZS 4087 B5 & B6
 - StandardsMark & WaterMark to AS/NZS 2280, WSAA Appraisal



**Series 718/1042
Socket x Flange Tee**

- DN100-750
- Manufactured in accordance with AS/NZS 2280
 - PN16/35 pressure rated
 - Socket ends with S2 Gaskets
 - S1 Gasket optional
 - Offtake Flange Drilling to AS/NZS 4087 B5 & B6
 - StandardsMark & WaterMark to AS/NZS 2280, WSAA Appraisal



**Series 718/1045 Socket
/ Flange / Spigot Tee**

- DN100-750
- Manufactured in accordance with AS/NZS 2280
 - PN16/35 pressure rated
 - Socket ends with S2 Gaskets
 - S1 Gasket available
 - Offtake Flange Drilling to AS/NZS 4087 B5 & B6
 - StandardsMark & WaterMark to AS/NZS 2280, WSAA Appraisal



**Series 718/1044
Spigot x Flange Tee**

- DN100-750
- Manufactured in accordance with AS/NZS 2280
 - PN16/35 pressure rated
 - StandardsMark & WaterMark to AS/NZS 2280, WSAA Appraisal

FITTINGS



**Series 718/7410
Socket Cap**

- DN80-750
- Manufactured in accordance with AS/NZS 2280
 - PN35 pressure rated
 - Socket ends with S2 Gaskets
 - S1 Gasket optional
 - StandardsMark & WaterMark to AS/NZS 2280, WSAA Appraisal
 - Optional 2" tapping



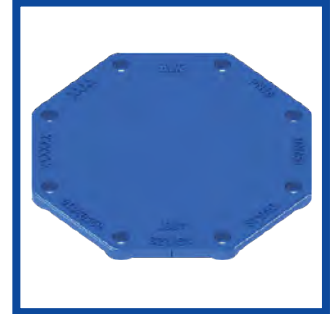
**Series 718/7812 Flange
Spigot Connector**

- DN80-750
- Manufactured in accordance with AS/NZS 2280
 - PN16/35 pressure rated
 - Drilling to AS/NZS 4087 B5 & B6
 - StandardsMark & WaterMark to AS/NZS 2280, WSAA Appraisal



**Series 718/2X10
Concentric / Eccentric
Taper**

- DN80-750
- Manufactured in accordance with AS/NZS 2280
 - PN16/35 pressure rated
 - Drilling to AS/NZS 4087 B5 & B6
 - StandardsMark & WaterMark to AS/NZS 2280, WSAA Appraisal



**Series 718/3X10
Blank Flange**

- DN80-750
- Manufactured in accordance with AS/NZS 2280
 - PN16/35 pressure rated
 - Drilling to AS/NZS 4087 B5 & B6
 - StandardsMark & WaterMark to AS/ NZS 2280, WSAA Appraisal
 - Optional tapping available ¾"-4"



**Series 718/0614
Flange Socket Bend**

- DN80-375
- Manufactured in accordance with AS/NZS 2280
 - PN16 pressure rated
 - 90° bend
 - Socket ends with S2 Gaskets
 - S1 Gasket optional
 - StandardsMark & WaterMark to AS/NZS 2280, WSAA Appraisal
 - Optional 2" tapping



**Series 718/7540
Socket Connector**

- DN100-750
- Manufactured in accordance with AS/NZS 2280
 - PN35 pressure rated
 - Socket ends with S2 Gaskets
 - S1 Gasket optional
 - StandardsMark & WaterMark to AS/NZS 2280, WSAA Appraisal



**Series 718/7814 Flange
Socket Connector**

- DN80-750
- Manufactured in accordance with AS/NZS 2280
 - PN16/35 pressure rated
 - Socket ends with S2 Gaskets
 - S1 Gasket optional
 - Flange Drilling to AS/ NZS 4087 B5 & B6
 - StandardsMark & WaterMark to AS/NZS 2280, WSAA Appraisal



**Series 718/4X10
Hydrant Riser**

- DN80-150
- Manufactured in accordance with AS/NZS 2280
 - PN16/35 pressure rated
 - Flange Drilling to AS/ NZS 4087 B5 & B6
 - StandardsMark & WaterMark to AS/NZS 2280, WSAA Appraisal

FITTINGS



**Series 718/AB60
Bellmouth**

- DN100-750
- Manufactured in accordance with AS/NZS 2280
 - PN16 pressure rated
 - Drilling to AS/NZS 4087 B5
 - StandardsMark & WaterMark to AS/NZS 2280, WSAA Appraisal



**Series 718/AF42
Scour Tee**

- DN100-750
- Manufactured in accordance with AS/NZS 2280
 - PN16/35 pressure rated
 - Socket ends with S2 Gaskets
 - S1 Gasket optional
 - Drilling to AS/NZS 4087 B5 & B6
 - StandardsMark & WaterMark to AS/NZS 2280, WSAA Appraisal



**Series 718/2040
Concentric Taper**

- DN150-750
- Manufactured in accordance with AS/NZS 2280
 - PN35 pressure rated
 - Socket ends with S2 Gaskets
 - S1 Gasket optional
 - StandardsMark & WaterMark to AS/NZS 2280, WSAA Appraisal



**Series 7182110
Eccentric Reducer**

- DN100-750
- Manufactured in accordance with AS/NZS 2280
 - PN16/35 pressure rated
 - Drilling to AS/NZS 4087 B5 & B6
 - StandardsMark & WaterMark to AS/NZS 2280, WSAA Appraisal



**Series 265
Dismantling Joint**

- DN80-1200
- PN16 pressure rated
 - SS316 fasteners
 - EPDM seal
 - Thrust type
 - Flange dimensions to AS/NZS 4087, drilling to B5
 - Up to +/- 25mm axial adjustment



**Series 910
Y-Strainer**

- DN80-300
- PN16/25 pressure rated
 - SS316 fasteners and screen
 - Quick removal lid for ease of maintenance
 - Flange drillings to AS/NZS 4087 B5 & B6, AS2129 Table E
 - Low head loss



FLANGED PIPE



	Ductile Iron Cement Lined (DACL)	Ductile Iron Fusion Coated (Fusion Bonded Epoxy (FBE) (DIFC)	Ductile Iron Polyurethane Lined (DIPU)
Lining / Coating	DACL / Z+	DIFC / FC	DIPU / Z+
Application	Potable Water, Recycled Water, Raw Water	Potable Water, Recycled Water, Raw Water, Waste Water – Gravity and Pressure Sewer Effluent, Domestic Waste Water, Process Water, Fluids between pH1–pH12	Potable Water, Recycled Water, Raw Water, Waste Water – Gravity and Pressure Sewer Effluent, Domestic Waste Water, Process Water, Fluids between pH1–pH12
Colour	Blue	Blue	Black
Coating	Z+ Zinc Aluminium Rare Earth Alloy – Applied at 400g/m ² Synthetic Resin layer 100µm	Fusion Bonded Epoxy	Z+ Zinc Aluminium Rare Earth Alloy – Applied at 400g/m ² Synthetic Resin layer 100µm
Lining	Sulphate Resisting Cement (SR)	Fusion Bonded Epoxy	Polyurethane
Sleeving Required	*Soil testing dependant for below ground applications	–	*Soil testing dependant for below ground applications



ACCESSORIES



**Series 05/E
Support Bush,
Wedge Type**

- DN50-600
- Use with Supa Plus & Supa Maxi connections when joining PE pipe
 - Stainless Steel 316 for SDR11 pipe
 - Stainless Steel 304 for other SDR pipes



**Series 08/A
Handwheel**

- DN50-600
- For use with AVK Gate Valves
 - Anticlockwise and Clockwise closure



**Series 57/00
Anchor Legs**

- DN100-150
- For use with S57050 & S570/51 Socket gate valves
 - Ductile iron
 - Epoxy Coated to AS/NZS 4158



**Series 57/C
Stem cap**

- DN50-600
- For use with extension spindles, gate and service valves
 - Ductile iron
 - Epoxy Coating to AS/NZS 4158
 - Anticlockwise and Clockwise closure
 - Stainless Steel fastener



**Series 753
Multi Turn Gearbox**

- Rotork Gearbox
- Spur & Bevel options
- IP67/68 enclosure ratings
- Heavy duty cast iron
- Ask AVK for sizing assistance



**Series 755
Worm Gearbox**

- Rotork S242 gearbox
- Suits S76 Butterfly Valves
- Quarter turn worm gear
- IP67 enclosure rating
- 40:1 ratio
- Cast housing



**Series 758
Bevel Gearbox**

- Multi turn AVK Bevel gearbox
- Suits gate valves DN80-200
- F10 ISO Mount
- 2:1 Ratio
- 1.5:1 mechanical advantage
- IP68 enclosure rating



**Extension
Spindle**

- Suits gate valves DN80-600
- Ductile iron spindle cap and key
- Shaft is keyed and pinned to cap to avoid welding
- 32mm solid square alloy steel shaft
- Bitumen coating
- SS options available including ISO Flanges

ACCESSORIES



Position Indicators

- Range of position indicators available from major manufacturers
- Material options include Aluminium, Ductile Iron and Stainless Steel
- IP67 & IP68 enclosure ratings available



Torque Limiters

- Range of torque limiters available from major manufacturers
- Easy to adjust/set torque limit
- IP67 & IP68 enclosure ratings available



Pneumatic Actuators

- Range of double acting and spring return pneumatic actuators available from major manufacturers
- Full range of output torque and ISO mounting options
- Accessories including solenoid valves, limit switches and positioners available
- Supply air 3-8 bar



Electric Actuators

- Range of open/close and modulating electric actuators available from major manufacturers
- Datalogging and torque profiling
- Field setup made easy via use of handheld setting tool
- Highly intuitive with multiple torque and control options



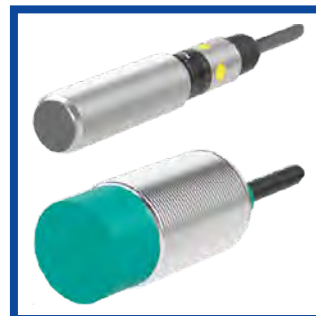
Electric Quarter Turn Actuator

- Range of quarter turn electric actuators available from major manufacturers
- 12v, 24vdc, 240v, 415v
- Adjustable Limit Switches
- Coating options
- IP Ratings
- Multiple internal features



Limit Switch Box

- SPDT micro switches
- Proximity switches
- IP65, 67 or 68 enclosure ratings



Proximity Sensors

- Pepperl + Fuchs proximity switches
- Sensing range 1mm-50mm
- Cable and connection types
- Stainless and chemical resistant housings
- 2, 3 or 4 wire



Solenoid Valve

- Pepperl + Fuchs proximity switches
- 1000kPa pressure rating
- Namur mount
- Aluminium construction
- 3/2-5/2 conversion plate
- 24vDC
- 240vAC
- 110vAC
- 24vAC

AVK Australia Holding Pty Ltd
559a Grand Junction Road
Wingfield SA 5013
Australia

©2026 AVK Australia Holding Pty Ltd
Ref. No. 260401

1300 381 200
enquiries@avk.com.au
orders@avk.com.au
www.avkcivil.com.au

