



AVK SERIES 851 SINGLE & DOUBLE ORIFICE AIR RELEASE VALVES (WATER) INSTALLATION, OPERATION & MAINTENANCE MANUAL



Instruction for use

Thank you for selecting an AVK product. With correct use, the product is guaranteed to deliver a long and reliable service. This manual has been prepared to assist you with the installation, operation and maintenance of the valve to the maximum efficiency. For ease of reference, it has been divided into sections covering all aspects of use, and it is in the users best interests to read it and ensure that it is fully understood.



Health and Safety

It is always recommended that wherever work is being carried out on a valve that the valve is fully depressurised prior to carrying it out, and for the convenience draining of the line may be beneficial.

It is essential that the user of the valve is aware of the weight of the components and/or assemblies that must be handled and manipulated during installation and maintenance. It is the users responsibility to ensure that safe working practices are followed at all times.

Whenever AVK products are installed, operated, or maintained, it is essential that the staff that undertake these operations be adequately trained. The hazards of pressurised liquids and gases can be severe, and it is the responsibility of the users to ensure that trained, competent staff undertake these duties. This manual has been designed to assist, but it can never fully replace quality training in the workplace. AVK technical staff will always be available to answer any questions relating to specific problems that may not be covered by this manual.

AVK products are designed and manufactured to be fit for purpose, and to a high and reliable standard. This provides a safe product with minimum risk to health when used correctly for the purpose for which it was designed. However, this assumes that the equipment is used and maintained in accordance with the manual, and the user is advised to study this manual, and to make it available to all staff that may need to refer to it.

AVK cannot be held responsible for any incidents arising from incorrect installation, operation or maintenance. The responsibility for this must rest wholly with the user.

AVK SERIES 851 SINGLE & DOUBLE ORIFICE AIR RELEASE VALVES (WATER) INSTALLATION, OPERATION & MAINTENANCE MANUAL

Storage

- Protection against weather should be provided. Ideally, valves should be kept indoors with the actual valve temperature always higher than the dew point.
- If outdoor storage is unavoidable the valves should then be supported off the ground and protected by a weatherproof cover, from dust-laden damp or saline conditions and at an ambient temperature.
- If long term storage is envisaged, then it may be considered prudent to have a AVK engineer inspect the valve prior to installation.

Handling

A basic consideration in handling protected valves should be to avoid damaging the coating protection and valves should never be thrown or dropped. Valves whose size requires handling by crane or lift truck should be slung or rigged carefully to avoid damage to exposed valve parts.

AVK SERIES 851 SINGLE & DOUBLE ORIFICE AIR RELEASE VALVES (WATER) INSTALLATION, OPERATION & MAINTENANCE MANUAL

1. Introduction

AVK air release valves can be fitted to any peak on a pipeline where the pressure is greater than 0.1 bar and up to the maximum working pressure. The dual orifice air release valves operation is completely automatic and are capable of fulfilling the venting requirement of the pipeline and release any air or gas under pressure which has accumulated in the system without any manual aid.

When fitted with a vented non return kit the valve will allow air to be drawn into a pipeline normally during the process of de-watering. The high inflow rate is to prevent damaging vacuum pressure from developing.

When air or gas pressure in the pipeline increases relative to the atmospheric pressure on outflow conditions, the main aperture will close and controlled emission of gasses will occur through the cent-regulating valve, until the main valve closes.

When fitted with the in-flow check valve kit the valve will allow outflow of air when fillinf the pipeline but will not allow inflow of air when de-watering.

Materials:

Castings (body, bonnet and cowl)

Ductile Iron, grade 500-7 to AS 1831

Seals

EPDM WBS listed

Coating

Fusion bonded epoxy (FBE)

Fasteners

Stainless Steel

Refer to datasheet for specific information

Single Orifice Air Valve



Double Orifice Air Valve

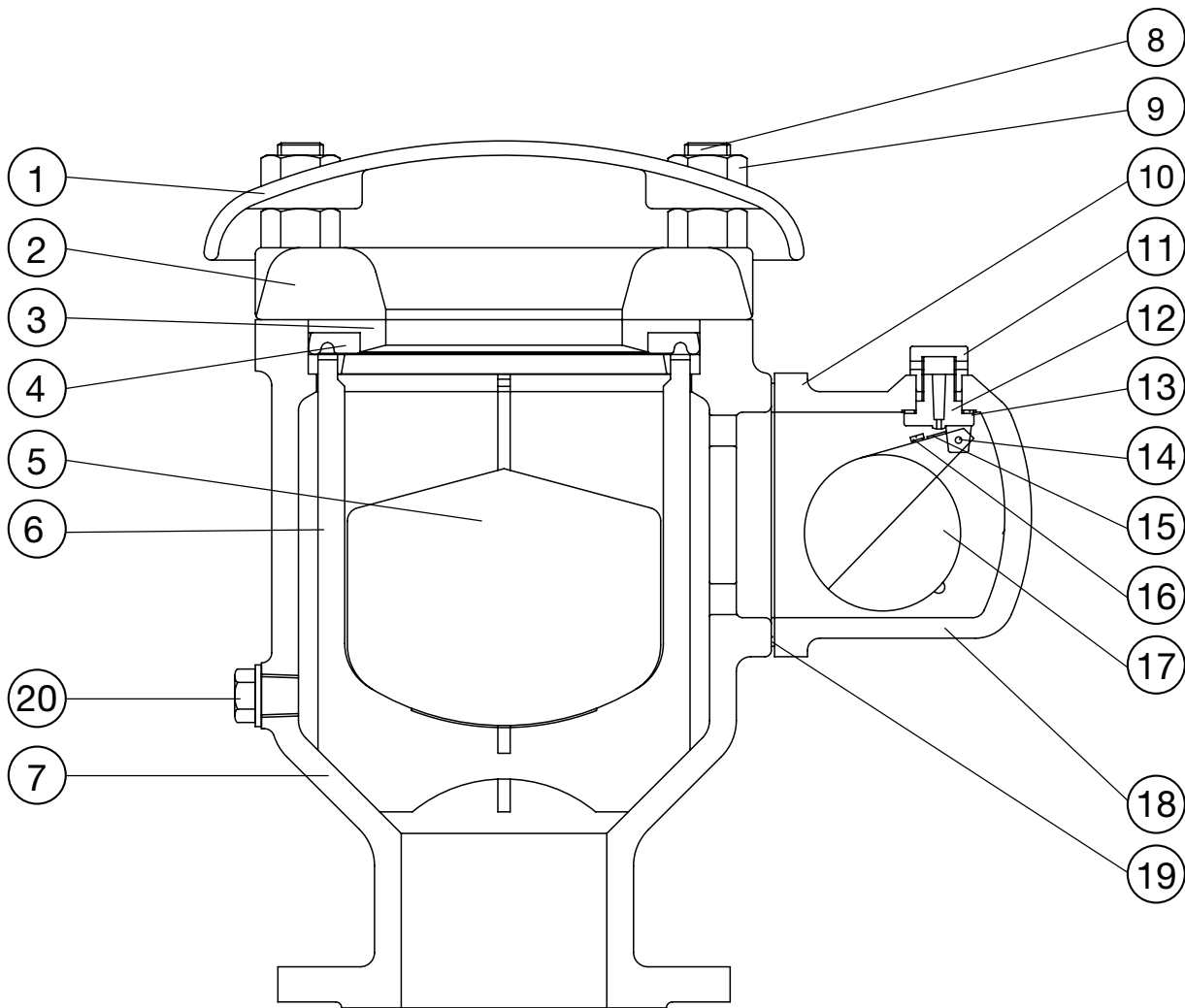


AVK SERIES 851 SINGLE & DOUBLE ORIFICE AIR RELEASE VALVES (WATER) INSTALLATION, OPERATION & MAINTENANCE MANUAL

Double Orifice Air Valve

Component list

- | | | | |
|----------------------|-----------------------|---------------------|---------------------|
| 1. Cowl | 6. Float guide | 11. Orifice cover | 16. Adjusting screw |
| 2. Cover | 7. Body | 12. Orifice bracket | 17. Float and lever |
| 3. Seat ring | 8. Screw | 13. Gasket | 18. Body |
| 4. Seat support ring | 9. Hexagon nut | 14. Fulcrum pin | 19. Gasket |
| 5. Float | 10. Screw, h/soc. cap | 15. Sealing face | 20. Drain plug |

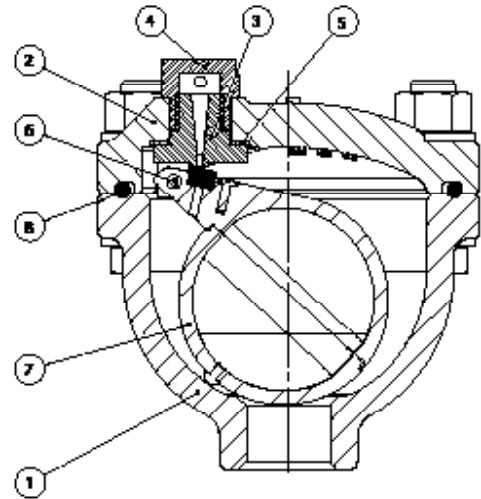
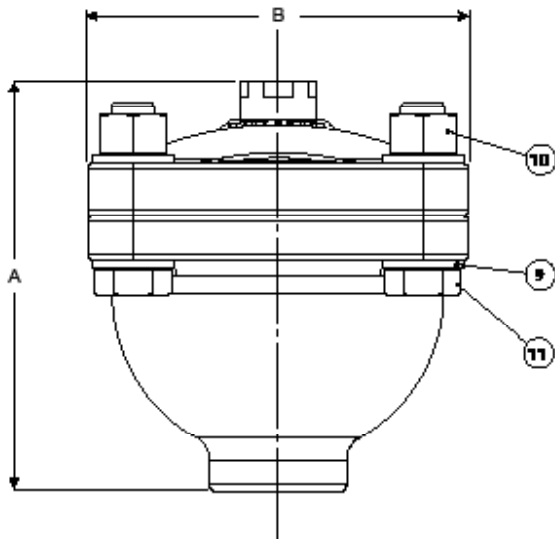


AVK SERIES 851 SINGLE & DOUBLE ORIFICE AIR RELEASE VALVES (WATER) INSTALLATION, OPERATION & MAINTENANCE MANUAL

Single Orifice Air Valve

Component list

- | | | |
|--------------------|----------------|--------------|
| 1. Body | 5. Gasket | 9. Washer |
| 2. Cover | 6. Grooved pin | 10. Nut |
| 3. Orifice bracket | 7. Float | 11. Hex bolt |
| 4. Orifice cover | 8. O-ring | |



AVK SERIES 851 SINGLE & DOUBLE ORIFICE AIR RELEASE VALVES (WATER) INSTALLATION, OPERATION & MAINTENANCE MANUAL

2. Installation

- These valves can be fitted on any peak on a pipeline where the pressure is greater than 0.1 bar and up to the maximum working pressure.
- They should be installed in a vertical position to allow smooth float movement and proper seating on the large Orifice valve, and to ensure that the lever operated small Orifice valve will seal the orifice efficiently and also re-open for air release under the correct working conditions.
- The space round the valve should be kept free of any obstructions which would prevent the free flow of air.
- When the valves are located below ground level, ample venting area should be provided for discharging and admitting large volumes of air during pipe filling and emptying operations.
- It is recommended that an isolating gate valve be fitted between the valve and the pipeline - if fitted with a butterfly valve it should incorporate a gearbox operator to ensure slow closure and opening of the valve.
- Tighten bolts in a diagonal sequence to ensure flanges are pulled parallel.
- Finally tighten bolts to correct torque levels as recommended in WSA 109.

AVK SERIES 851 SINGLE & DOUBLE ORIFICE AIR RELEASE VALVES (WATER) INSTALLATION, OPERATION & MAINTENANCE MANUAL

3. Operation

3.1. Valve operation

These valves are completely automatic in operation and are capable of fulfilling the venting requirement of the pipeline and will release any air or gas under pressure which has accumulated in the system without any manual aid.

3.1. Valves with Vented Non Return Unit

When the pressure in the pipeline is below atmospheric the valve disc will rise to open the valve and allow air intake. When the pressure increases the disc will fall and seal off the main aperture while controlled air emission takes place through the vent hole via the regulating valve.

The regulating valve is set for maximum emission. If a reduced air emission is required, the regulating valve should be turned anti-clockwise. A slot is provided for regulating purposes. If when the regulating valve is at its maximum setting (i.e. full in) and the air emission is still insufficient, the regulating valve may be removed completely thereby giving increased air flow capacity but of course no regulation is now possible.

3.2. Valves with In-flow Check Unit

When the pressure in the pipeline is below atmospheric the valve disc will drop to close the valve and allow no air intake. When line pressure increases the disc will rise and open the aperture with no controlling of the air emission rate.

AVK SERIES 851 SINGLE & DOUBLE ORIFICE AIR RELEASE VALVES (WATER) INSTALLATION, OPERATION & MAINTENANCE MANUAL

4. Options

AVK Series 851 Air Valves can be supplied fitted with the following options and all options are available as retrofit kit.

Options include:

- Vented non-return kit
- Inflow check unit
- Vent pipe for small orifice

Options such as strainers and non-return valves can also be fitted.

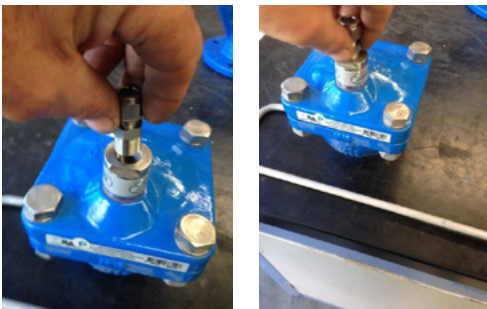
4.1. Installation of Vented Non Return Kit/Unit

1. Slacken and remove bolts and nuts from body/cover/cowl of existing air release valve.
2. Remove cover and cowl from existing air release valve.
3. Mount non return valve assembly on top of existing air release valve body.
4. Fit and tighten studs and nuts to hold assembly in position on body.

4.2. Installation of Vent Pipe (where specified)



1. Parts as supplied.



2. Screw in male connector by hand until firm (Use a sealant or thread tape to seal).

AVK SERIES 851 SINGLE & DOUBLE ORIFICE AIR RELEASE VALVES (WATER) INSTALLATION, OPERATION & MAINTENANCE MANUAL



3. Hold air valve discharge fitting with appropriate spanner. This ensures that it will not turn and over tighten. (If this is not done and over tightening occurs this will distort the internal fitting and may jam the float which will not operate correctly).



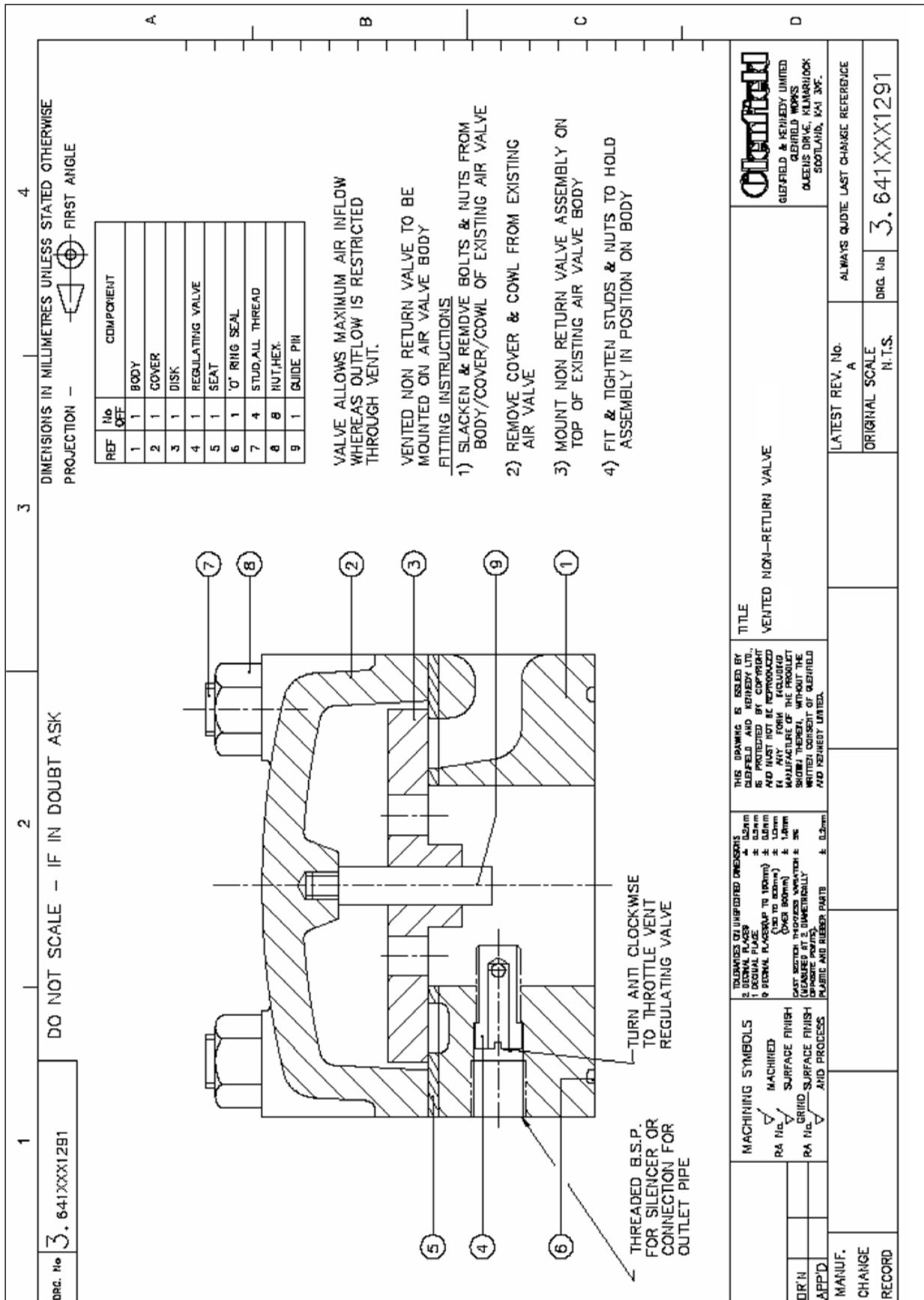
4. Use appropriate sized spanner to tighten the male connector body.



5. Insert stainless steel tube ensuring it bottoms out on male connector, use appropriate size spanner to tighten ferule nut while insuring the male connector body is held in position as not to turn.

Note force to tighten should always be spanner to spanner never spanner to fitting this ensures no over tightening or movement of existing fittings which may cause leakage or damage.

AVK SERIES 851 SINGLE & DOUBLE ORIFICE AIR RELEASE VALVES (WATER) INSTALLATION, OPERATION & MAINTENANCE MANUAL



AVK SERIES 851 SINGLE & DOUBLE ORIFICE AIR RELEASE VALVES (WATER) INSTALLATION, OPERATION & MAINTENANCE MANUAL

1

DO NOT SCALE - IF IN DOUBT ASK

DRG. No. **3.641XXX1292**

2

3

4

DIMENSIONS IN MILLIMETRES UNLESS STATED OTHERWISE
PROJECTION -

REF	No	COMPONENT
1	1	BODY
2	1	COVER
3	1	GUIDE PIN
4	1	DISK
5	4	STUD
6	6	NUT, HEX.
7	1	PLUG
8	1	O' RING
9	1	SEAT
10	1	BASKET

VALVE ALLOWS MAXIMUM AIR OUTFLOW BUT NO INFLOW.

CHECK VALVE TO BE MOUNTED ON AIR VALVE BODY.

FLUING INSTRUCTIONS

- 1) SLACKEN & REMOVE BOLTS & NUTS FROM BODY/COVER/COWL OF EXISTING AIR VALVE
- 2) REMOVE COVER & COWL FROM EXISTING AIR VALVE
- 3) MOUNT CHECK VALVE ASSEMBLY ON TOP OF EXISTING AIR VALVE BODY
- 4) FIT & TIGHTEN STUDS & NUTS TO HOLD ASSEMBLY IN POSITION ON BODY

<p>DRW'N</p> <p>APP'D</p> <p>MANUF.</p> <p>CHANGE</p> <p>RECORD</p>	<p>MACHINING SYMBOLS</p> <p>PA No. MACHINED</p> <p>PA No. SURFACE FINISH</p> <p>PA No. GRIND SURFACE FINISH</p> <p>AND PROCESS</p>	<p>RELEASED ON UNREGISTERED ENGINEERS</p> <p>1 (EXTERNAL PLATE)</p> <p>2 (INTERNAL PLATE)</p> <p>3 (OVER 10mm)</p> <p>4 (OVER 15mm)</p> <p>5 (OVER 20mm)</p> <p>6 (OVER 25mm)</p> <p>7 (OVER 30mm)</p> <p>8 (OVER 35mm)</p> <p>9 (OVER 40mm)</p> <p>10 (OVER 45mm)</p> <p>11 (OVER 50mm)</p> <p>12 (OVER 55mm)</p> <p>13 (OVER 60mm)</p> <p>14 (OVER 65mm)</p> <p>15 (OVER 70mm)</p> <p>16 (OVER 75mm)</p> <p>17 (OVER 80mm)</p> <p>18 (OVER 85mm)</p> <p>19 (OVER 90mm)</p> <p>20 (OVER 95mm)</p> <p>21 (OVER 100mm)</p>	<p>TITLE</p> <p style="text-align: center;">IN-FLOW CHECK VALVE</p> <p>THIS DRAWING IS MADE BY GLENFIELD VALVES LIMITED. IT IS PROTECTED BY COPYRIGHT AND MUST NOT BE REPRODUCED IN ANY FORM INCLUDING PHOTOGRAPHY, RECORDING, OR BY ANY INFORMATION STORAGE AND RETRIEVAL SYSTEM, WITHOUT THE WRITTEN CONSENT OF GLENFIELD VALVES LIMITED.</p>
<p>LATEST REV. No.</p> <p>ORIGINAL SCALE</p>	<p>3.641XXX1292</p> <p>NTS</p>	<p>ALWAYS QUOTE LAST CHANGE REFERENCE</p>	<p>GLENFIELD</p> <p>GLENFIELD VALVES LTD. BELFIELD WORKS WINDIS DRIVE, FULVAHOCK SCOTSLAND, KA1 3JF.</p>

10
OM851

AVK SERIES 851 SINGLE & DOUBLE ORIFICE AIR RELEASE VALVES (WATER) INSTALLATION, OPERATION & MAINTENANCE MANUAL

5. Maintenance

5.1 The cover bolts on the large orifice valve and the nuts holding the small Orifice valve to the main body should be checked occasionally for tightness especially where the valve is subject to vibration (Bolt torque 40Nm).

Isolate the valve, drain the remaining water via the drain plug and dismantle both the large and small Orifice valves for examination.

5.2 Remove the cover and cover, withdraw the plastic float, guide assembly, seat ring and rubber seal ring.

If on examination any of these components show signs of cracking, ageing etc, replacement is necessary.

Careful examination is required at the float sealing edge of the rubber seal ring and also on the outside rim which acts as a static cover seal.

5.3 Any growth formed within the valve should be removed.

Surface corrosion on the machined recess on the top of the body should be removed with emery, and its surface smeared with silicon grease (MOLYKOTE 111).

5.4 Assembly consists of locating the float guide with float into the recess. Assemble the rubber seal ring on the plastic seat ring with the plain rubber face, towards the plastic seat. Place both into recess on the top of the guide ring, rubber face down, using a slightly turning motion. Replace the cover and tighten down metal to metal. Fit the cowl.

5.5 The float guide assembly consists of 3 pieces, the 'U' legs sit on the cone shape above the body throat, thus transmitting float impact direct to the body. The top ring is assembled with large inside diameter of the taper facing into the valve, the 'U' legs located in this top ring but free to be pushed down to touch the taper in the body.

Small Orifice

5.6 The small Orifice valve body should be unbolted from the large orifice valve, the float and orifice bracket assembly removed after unscrewing the orifice cover and the following points examined.

5.7 Check the float for freedom of movement and inspect the fulcrum pin and bearing, on the glass filled nylon lugs for excessive wear.

5.8. Inspect the rubber seat in the float lever for deterioration or excessive permanent set. In the early valve types the seats are held in position by interference ribs in the recess. These can simply be inverted into the recess to obtain a new sealing surface.

The later types are bonded using a M.E.K. solvent. If removal is necessary, the rubber must be removed and a new seat solvent cemented in position.

5.9 Adjusting screw

The purpose of this screw is to limit the degree of compression by the orifice sealing lip on the rubber face.

It is set at the initial assembly so that when the orifice is just seating, there is a clearance of 0.7 to 1mm (0.030" to 0.040") between the top of the orifice bracket. This would not normally require resetting.

AVK SERIES 851 SINGLE & DOUBLE ORIFICE AIR RELEASE VALVES (WATER) INSTALLATION, OPERATION & MAINTENANCE MANUAL

5.10 Check that the nylon Orifice is not damaged and that the air passageway is clear through to the valve exterior.

5.11 Inspect the plastic float for leaks or ageing and replace if necessary.

5.12 When installing the float assembly into the body, easier location can be achieved by having the body inverted i.e. the mounting hole is facing downwards and the screwed part of the Orifice bracket is lowered onto it, being held in location until the orifice cover is screwed on. Care must be taken to tighten the cover so that the float will swing on the plane of the central axis of the body and not foul the interior wall.

Note: The Orifice cover should not be tightened after this body is assembled to the main valve since the float assembly is not located against turning. Any rotation out of the central position could cause jamming or restricted float travel.

